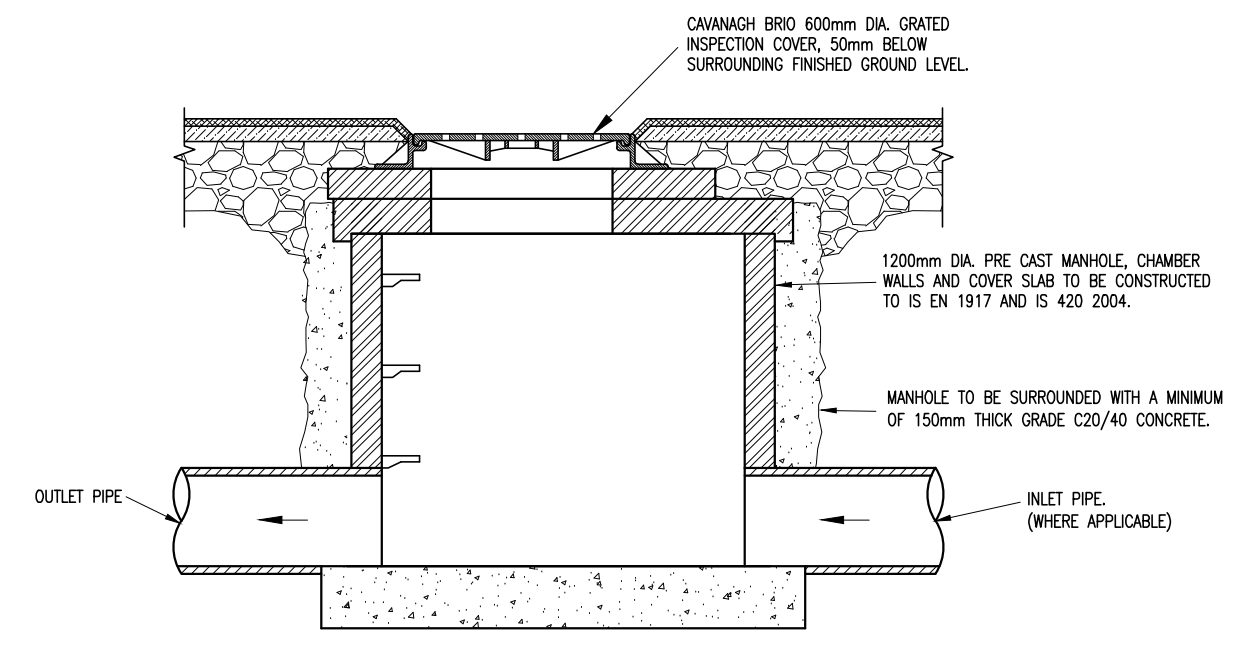
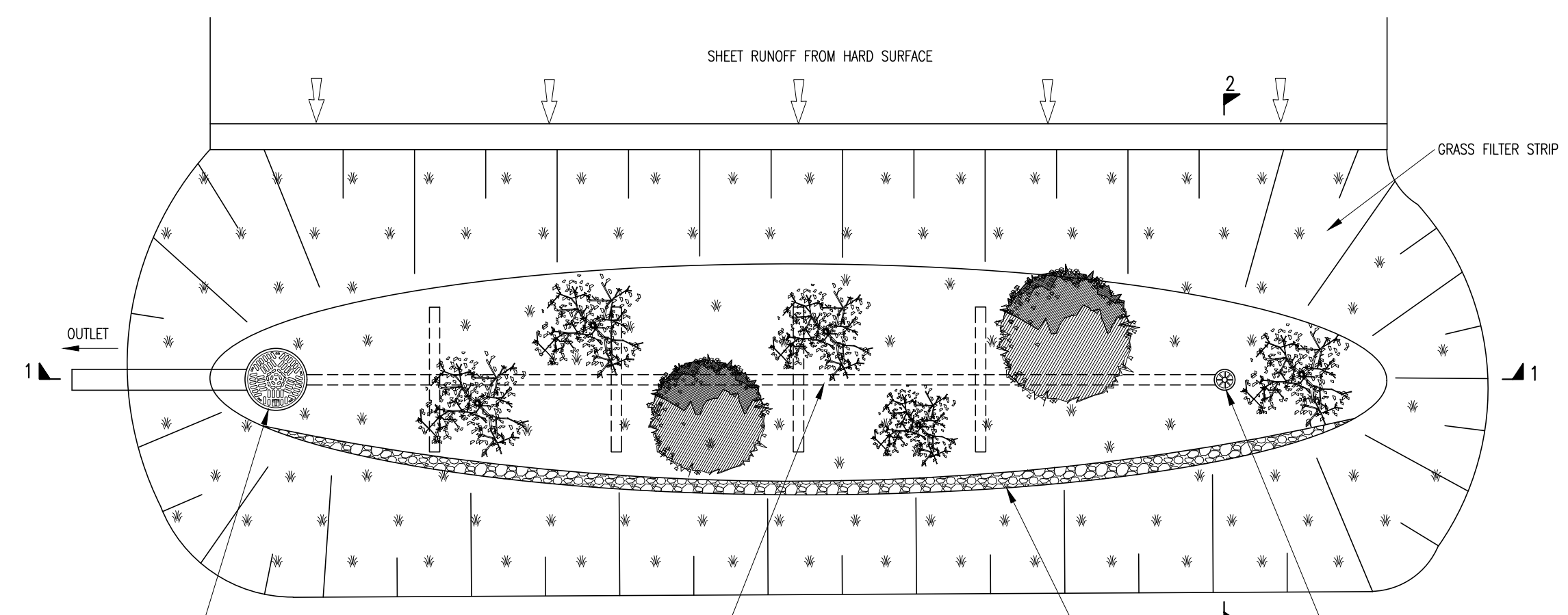


**TYPICAL SERVICES PROTECTION DETAIL**  
SCALE: 1:25

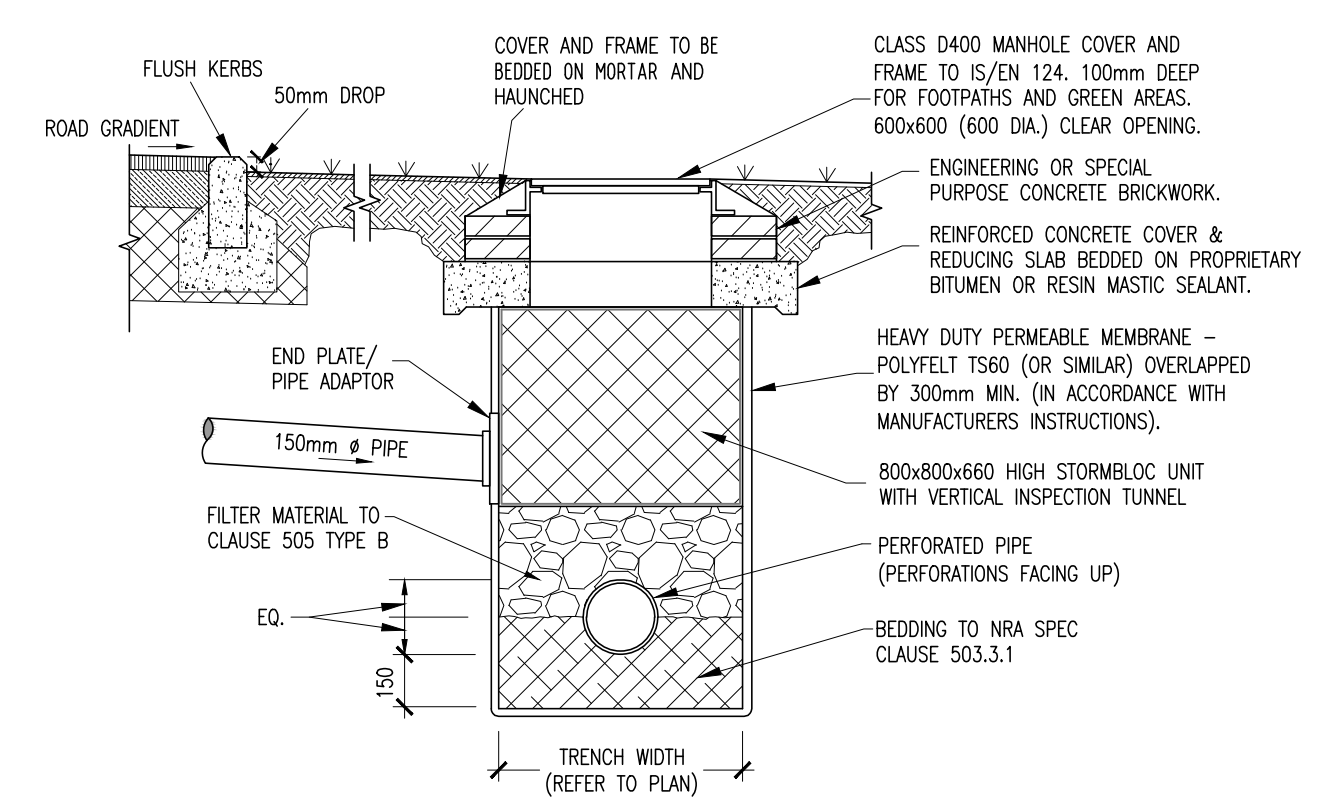


**GRADED MANHOLE INLET CHAMBER - CROSS-SECTION**  
SCALE: N.T.S.

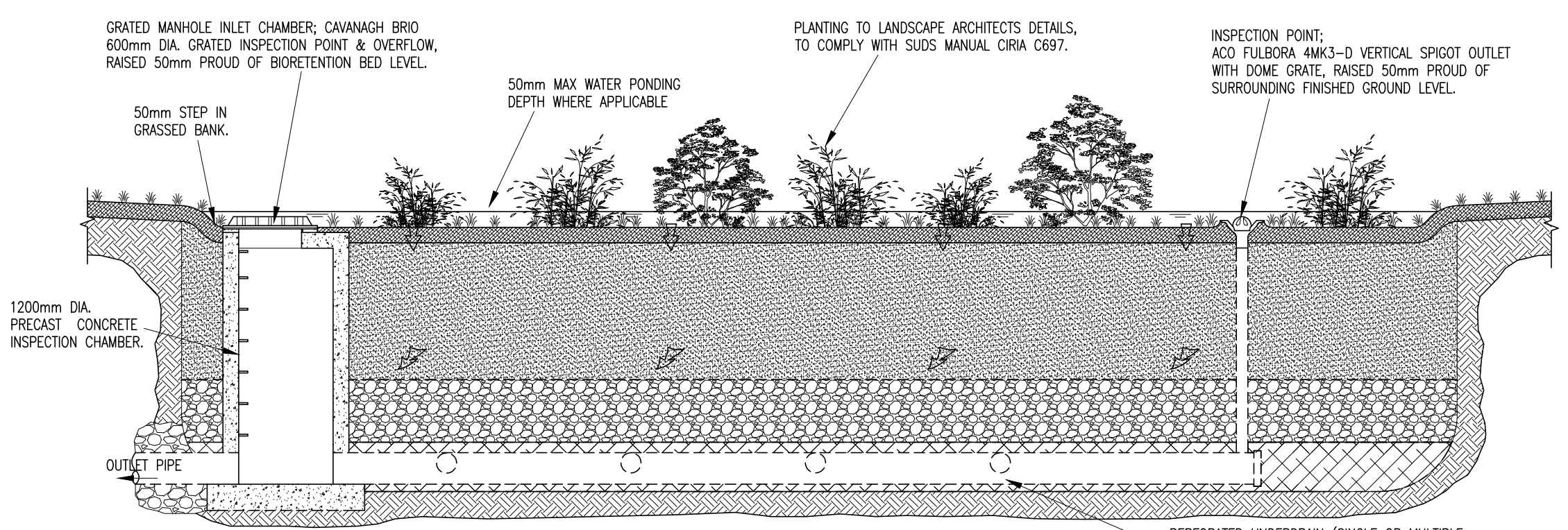


**PLAN**

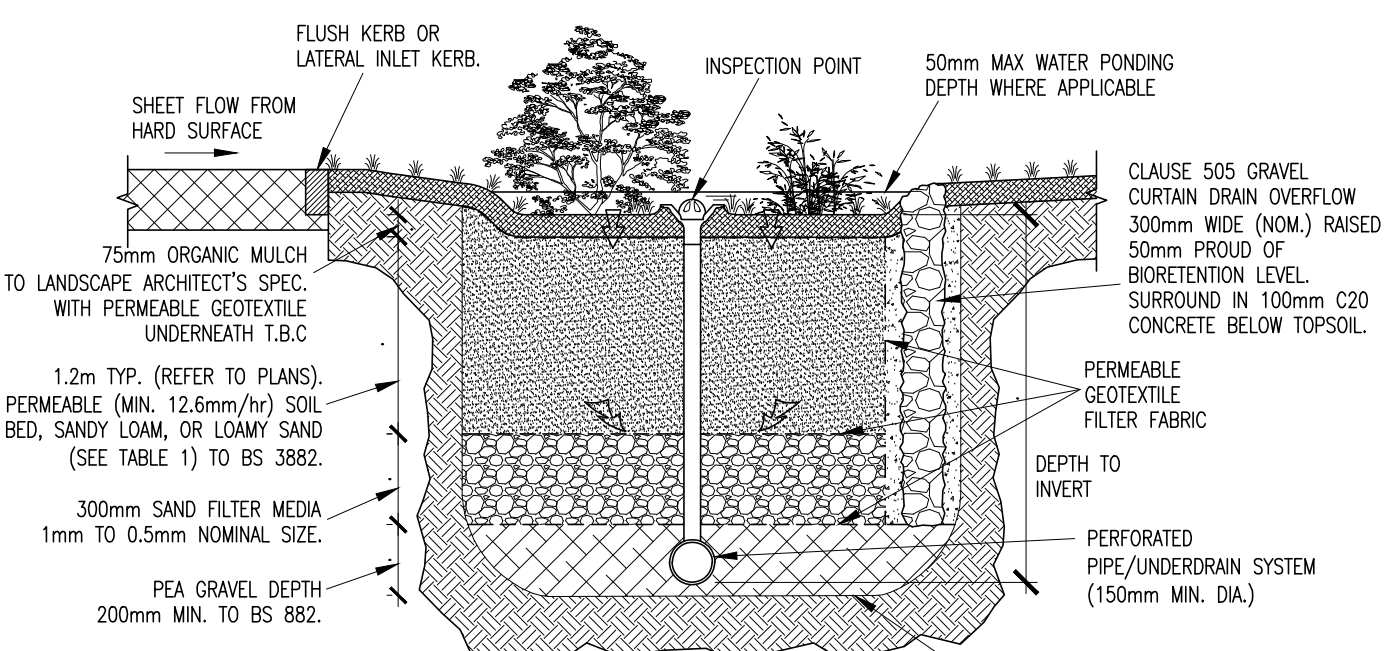
TABLE 1	
COMPONENT	PERCENTAGE MIXTURE
SAND	35-60%
SILT	30-50%
CLAY	10-25%
ORGANIC MATTER	0-4%
TOP SOIL	-



**GULLY CONNECTION TO FILTER DRAIN**  
SCALE: N.T.S.



**SECTION 1-1**



**SECTION 2-2**

**BIORETENTION AREA - SCHEMATIC LAYOUT**  
SCALE: N.T.S.

- NOTES:
- WHERE ROCKS OR OTHER HARD TRENCH BOTTOM IS ENCOUNTERED, THE FIGURE DENOTED BY \* IS TO BE DOUBLED.
  - TYPE 1 GRANULAR MATERIAL: BROKEN STONE OR GRAVEL TO PASS 10mm SIEVE AND BE RETAINED ON 5mm SIEVE.
  - TYPE 2 GRANULAR MATERIAL: BROKEN STONE OR GRAVEL TO PASS 10mm - 25mm SIEVE, ACCORDING TO PIPE SIZE, (SEE TABLE) AND BE RETAINED ON 5mm SIEVE.
  - CLAUSE 601 S.R.W. BACKFILL: UNIFORM READILY COMPACTED MATERIAL FREE FROM TREE ROOTS, VEGETABLE MATTER, BUILDING DEBRIS, AND FROZEN SOIL AND EXCLUDING CLAY LUMPS RETAINED ON A 75mm SIEVE AND STONES RETAINED ON A 37.5mm SIEVE.
  - RIGID PIPES SHALL MEAN CAST OR SPUN IRON, CONCRETE OR CLAY.
  - GULLY GRATINGS AND FRAMES SHALL COMPLY WITH THE REQUIREMENTS OF I.S./E.N/124 1994. GULLIES SHALL BE CLASS D400.
  - GULLY WALLS SHALL BE CONSTRUCTED IN CLASS 30N/mm<sup>2</sup> PRECAST OR INSITU CONCRETE OR ALTERNATIVELY IN SOLID CONCRETE BLOCKS DESIGNATED S10, STRENGTH 10N/mm<sup>2</sup>
  - ALL PIPES TO BE BEDDED IN ACCORDANCE WITH MANUFACTURERS RECOMMENDATIONS
  - SURFACE WATER SEWERS TO BE CLASS H CONCRETE TO IS EN1916 AND IS 6 2004.

REV.	DATE	DESCRIPTION	BY	CHKD.
P1	03-12-19	FOR ABP APPLICATION	JVS	BK

**DBFL** CONSULTING ENGINEERS  
 DUBLIN OFFICE: Ormond House, Upper Ormond Quay, Dublin 7, Ireland. PHONE +353 1 400 4000 FAX +353 1 400 4050  
 WATERFORD OFFICE: Unit 2, The Chandlery, 1-2 O'Connell Street, Waterford, Ireland. PHONE +353 51 339 550 FAX +353 51 844 913  
 DBFL Consulting Engineers email: info@dbfl.ie site: www.dbfl.ie

PROJECT  
**PROPOSED DEVELOPMENT AT CORNELSCOURT**

DRG. TITLE  
**TYPICAL DRAINAGE CONSTRUCTION DETAILS SHEET 3**

CLIENT  
**CORNEL LIVING LIMITED**